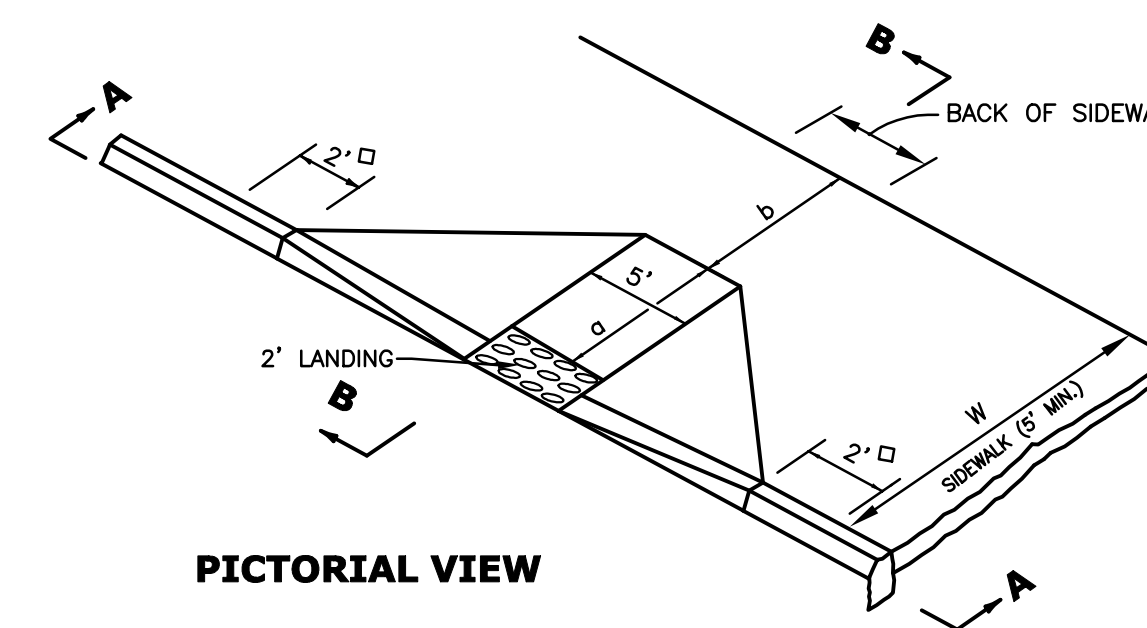


**LOCATION MAP**  
N.T.S.

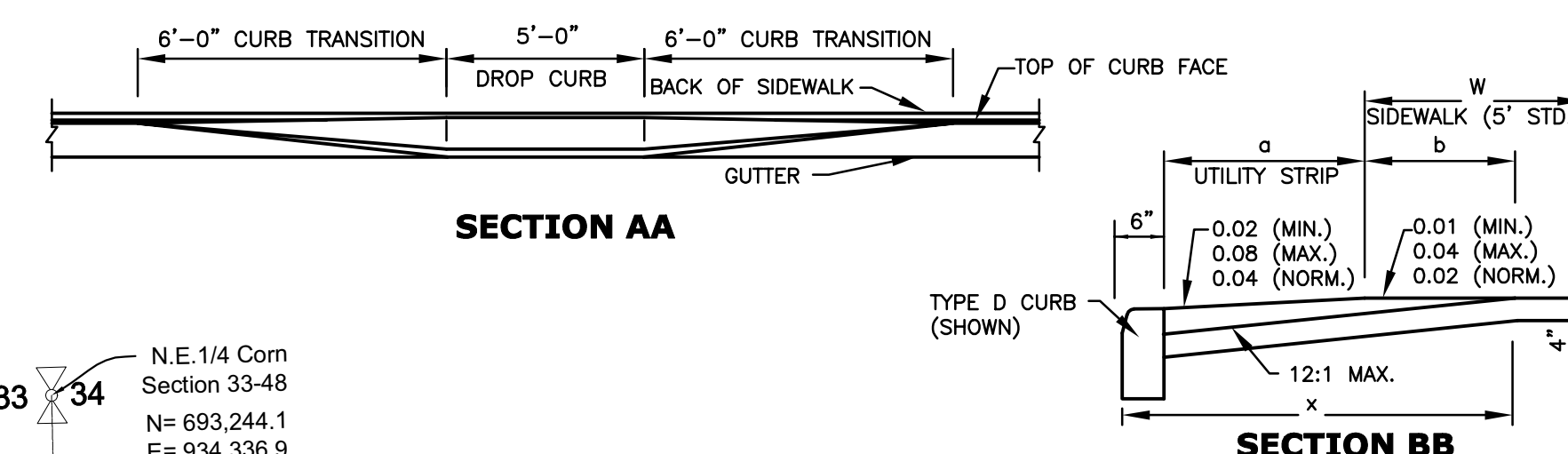
W	a	W+a+10'	X	b
5'	0'	5.8'	5.8'	5.0*
6'	0'	6.8'	6.8'	6.0**
7'	0'	7.8'	7.3'	6.5**
8'	0'	8.8'	7.3'	6.5**
5'	2.0'	7.8'	7.8'	5.0'
5'	2.5'	8.3'	8.1'	4.8'
5'	3.0'	8.8'	8.3'	4.4'
5'	3.5'	9.3'	8.4'	4.1'
5'	4.0'	9.8'	8.6'	3.8'
5'	4.5'	10.3'	8.7'	3.4'
5'	5.0'	10.8'	8.9'	3.1'

b = x - (a + 10')  
b = DISTANCE FROM FRONT EDGE OF SIDEWALK TO BACK POINT OF 12:1 SLOOPE  
\* BACK OF SIDEWALK DROP REQUIRED FOR ALL SIDEWALK SLOPES  
\*\* BACK OF SIDEWALK DROP REQUIRED FOR SIDEWALK SLOPES 0.04 AND PART 0.02

◇ NOT LESS THAN 2' OF FULL HEIGHT CURB ADJACENT TO DIAGONAL RAMP AND WITHIN CROSSWALK LIMITS  
□ CROSSWALKS WIDTHS AND CONFIGURATION VARY; MUST CONFORM TO TRAFFIC DESIGN STANDARDS



**PICTORIAL VIEW**



**SECTION AA**

**SECTION BB**

**NOTE:**  
RAMPS SHALL HAVE A TACTILE SURFACE, TEXTURED TO A DEPTH NOT EXCEEDING 1/8" BY USE OF A TAMP OR ROLLER FABRICATED WITH AN IMPRINTING SURFACE OF EITHER 1" MESH 0.250 WIRE CLOTH (PLAIN WEAVE, CONVENTIONAL CRIMP), 1-1/2" #6 EXPANDED METAL (STANDARD) OR 3 LB. EXPANDED METAL GRATING.

**INTRABLOCK RAMPS AND DIMENSIONAL FEATURES FOR RAMPS TRANSVERSE TO SIDEWALKS**  
N.T.S.

**GENERAL PAVING, GRADING AND DRAINAGE NOTES -**

1. THE LOCATION OF EXISTING UTILITIES AND TOPOGRAPHY HAS BEEN PREPARED FROM THE MOST RELIABLE INFORMATION AVAILABLE TO THE ENGINEER. THIS INFORMATION IS NOT GUARANTEED AND IT IS THE RESPONSIBILITY OF THE CONTRACTOR TO DETERMINE THE EXACT LOCATION OF ALL EXISTING UTILITIES AND TOPOGRAPHY PRIOR TO CONSTRUCTION.
2. ALL ELEVATIONS ARE BASED UPON N.A.V.D. 1988.
3. EXISTING TREES 'TO REMAIN' ARE TO BE PROTECTED WITH FENCING PER B.C.D.P.E.P. STANDARDS PRIOR TO CLEARING & GRUBBING AND DEMOLITION. TREE PROTECTION IS TO REMAIN IN PLACE THROUGHOUT CONSTRUCTION. THIS INCLUDES TREES 'TO BE RELOCATED' UP TO AND FOLLOWING RELOCATION.
4. EXISTING LIMEROCK BASE IS NOT TO BE USED FOR THE NEW ASPHALT LIMEROCK BASE. THE EXISTING LIMEROCK MAY BE UTILIZED FOR MIXING WITH SUB-BASE MATERIAL TO OBTAIN THE L.B.R. 40 REQUIREMENT.
5. ALL PROPOSED LANDSCAPE/RETENTION AREAS ARE TO HAVE THE EXISTING LIMEROCK BASE REMOVED AND REPLACED WITH CLEAN UNCOMPACTED FILL MATERIAL.

**DRWG. TITLE : PAVING, GRADING & DRAINAGE PLAN**  
**PROJECT : 2201 W ATLANTIC BLVD**  
**CLIENT : 2201, LLC**

SEAL  
**Daniel A. Fee, PE**  
State of Florida Lic. #38621  
#38621  
A2 PPE-PE  
LICENSE #38621

PROJECT NO. 331.01  
DRAWN BY D.A.F.  
DESIGNED BY D.A.F.  
CHECKED BY D.A.F.  
DATE : 08-17-21  
DWG. NO. **PGD-1**  
SHT. NO. 1 of 2

**DRC**  
PZ21-12000052  
8/17/2022